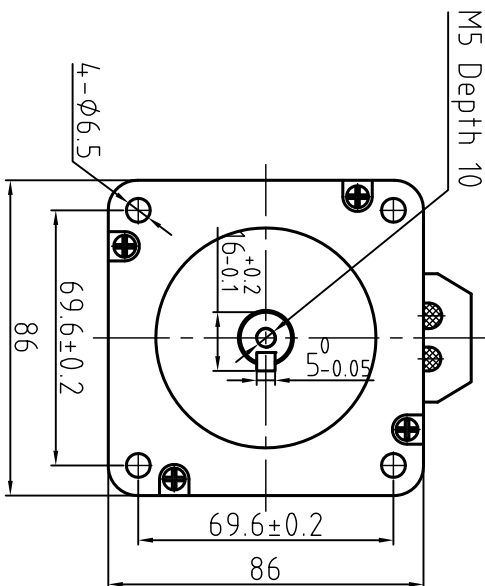
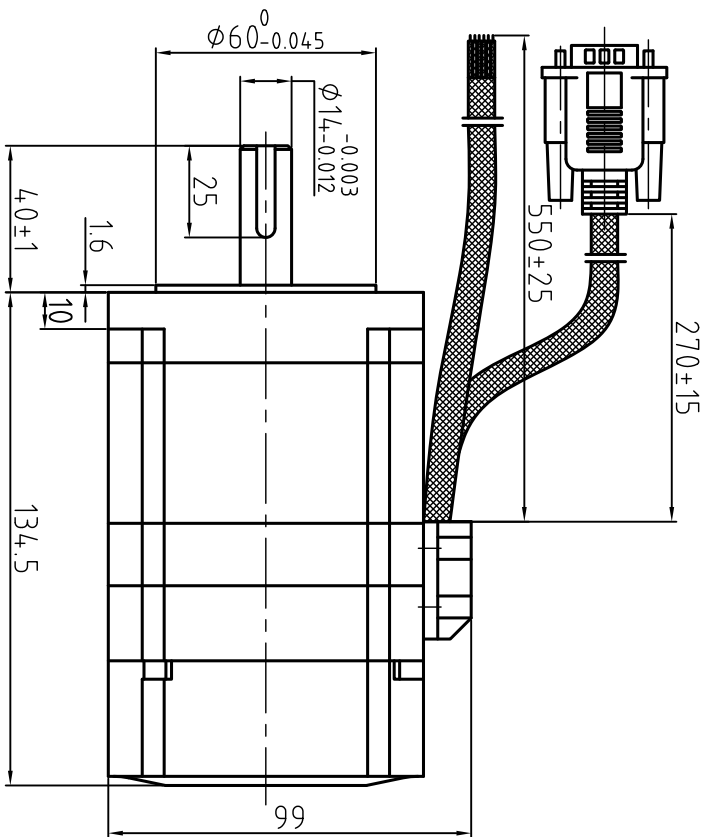
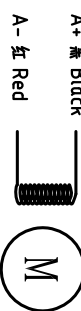


Dimension: (Unit: mm)

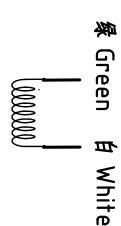


版本 Rev:	日期 Date	变更文件号 ECR NO.	变更内容 Revisions	设计 By
V1.0	13.11.21		初版	王平

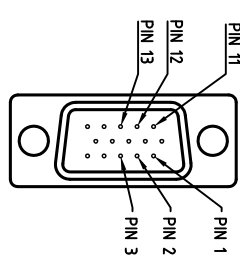
Motor Connctions



Brake Connctions



Encoder Signals



PIN	1	2	3	11	12	13
颜色	黑	红	白	黄	绿	蓝
定义	A+	VCC	GND	B+	B-	A-

Common Rating

Step angle	18°
Position accuracy	18±0.09°
Dielectric strength	1000VAC 1min
Insulation resistance	100MΩhm(500VDC)
Insulation class	B
Temp rise(Max)	80K
Radial play	Max:0.02mm(Load 450g)
Axial play	Max:0.08mm(Load 900g)

Specification

Current/phase	5.5 A
Voltage	2.5 V
DC Resistance/phase	±10% 0.4,6 Ω
Inductance/phase	±20% 4 mH
Holding torque	4 N·M
Inertia	1.95 kg·cm²
Weight	2.7 kg
Encoder Resolution	1000 cpr

Brake Specification

Voltage	24Vdc
Friction torque	4N·M

设计 Designed	日期 Date	材料 Material	深圳市雷赛智能控制股份有限公司 SHENZHEN LEADSHINE TECHNOLOGY CO., LTD.
审核 Checked		第一角视图 First Angle projection	混合伺服电机
批准 Approved		重量 Weight 比例 Scale	86HBM4.0-BZ-1000
图号 Part No.		共 1 套 第 1 套 Sheet 1 of 1	图号 DWG. NO. LS-HBM86-02-0110-01