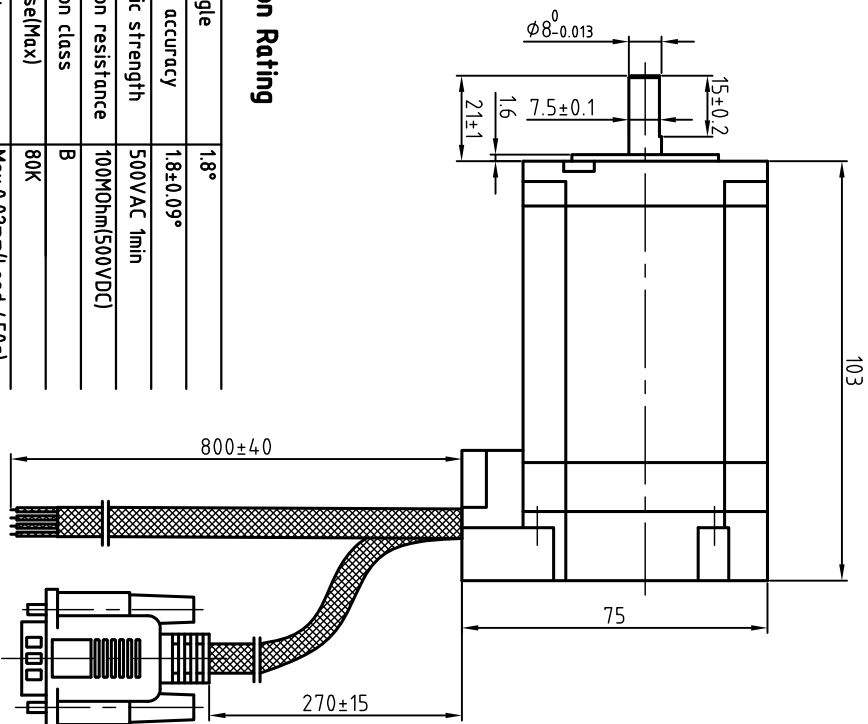
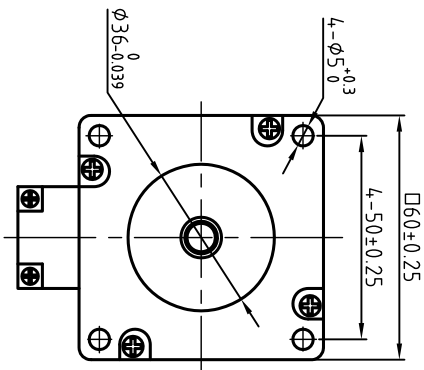


Dimension: (Unit: mm)

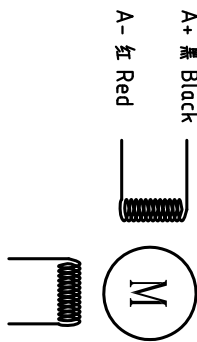


Step angle	1.8°
Position accuracy	1.8±0.09°
Dielectric strength	500VAC 1min
Insulation resistance	100MΩhm(500VDC)
Insulation class	B
Temp rise(Max)	80K
Radial play	Max:0.02mm(load 4.50g)
Axial play	Max:0.08mm(load 900g)

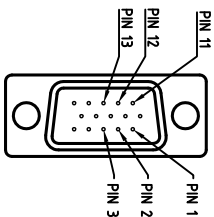


Current/phase	5.0 A
Voltage	2.3 V
DC Resistance/phase ±10%	0.4,5 Ω
Inductance/phase ±20%	2.0 mH
Holding torque	3.0 N·M
Inertia	0.69 kg·cm ²
Weight	1.5 kg
Encoder resolution	1000 cpr

Motor Connetions:



Encoder Signals



PIN	1	2	3	11	12	13
颜色	黑	红	白	黄	绿	蓝
定义	A+	VCC	GND	B+	B-	A-

设计 Designed	日期 Date	材料 Material	深圳市雷赛智能控制股份有限公司 SHENZHEN LEADSHINE TECHNOLOGY CO., LTD.
审核 Checked		第一角画法 First Angle projection	混合伺服电机
批准 Approved		重量/Weight 比例/Scale	60HBM30-1000
料号 Part No.		共 1 套 第 1 套 Sheet 1 of 1	图号 DWG. NO. LS-HBM60-02-0010-02

版本 Rev:	日期 Date	变更文件号 ECR NO.	变更内容 Revisions	设计 By
V1.0	12.9.27		60HBS30-EC-1000	王平
V1.0	15.4.7		改名60HBM30-1000	王平