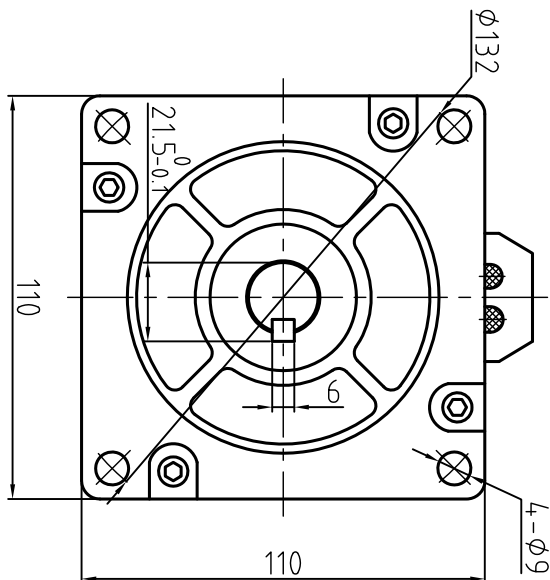
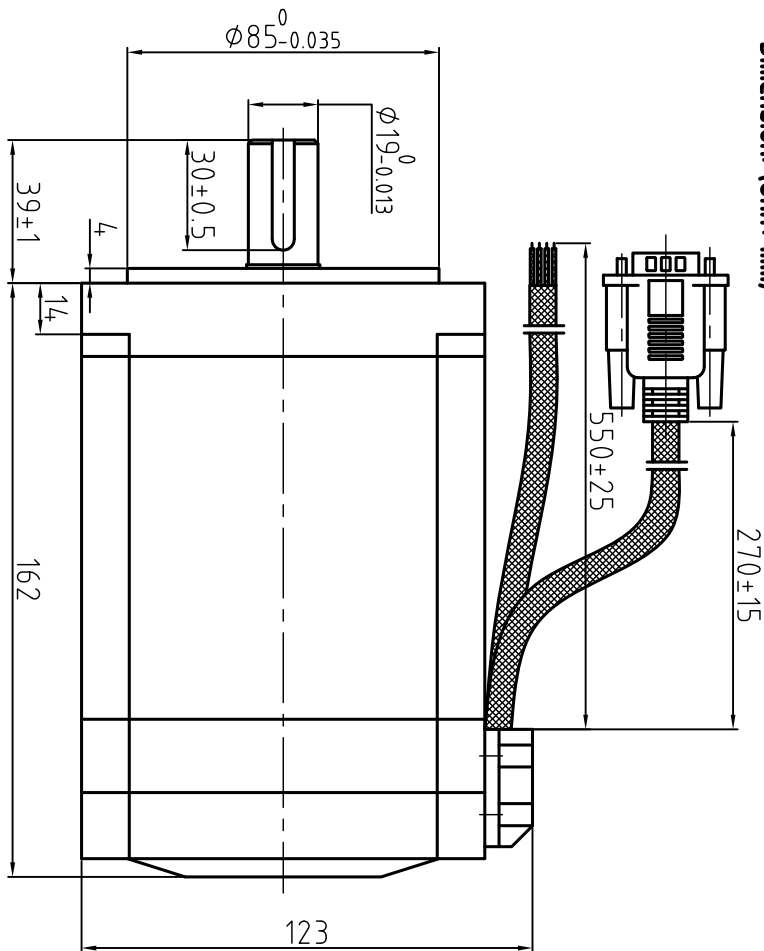


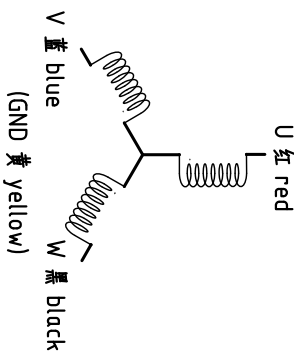
Dimension: (Unit: mm)



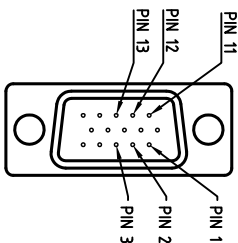
Specification

| | |
|--------------------------|-------------------------|
| Step angle | 1.2° |
| Position accuracy | 1.2±0.06° |
| Dielectric strength | 1500VAC 1min |
| Insulation resistance | 100MΩhm(500VDC) |
| Insulation class | F |
| Temp rise(Max) | 80K |
| Current/phase | 4.2 A |
| Voltage | 5 V |
| DC Resistance/phase ±10% | 1.2 Ω |
| Inductance/phase ±20% | 13 mH |
| Holding torque | 12 N·M |
| Inertia | 10.8 kg·cm ² |
| Weight | 8.6 kg |
| Encoder Resolution | 1000 cpr |

Motor Connections



Encoder Signals



| PIN | 1 | 2 | 3 | 11 | 12 | 13 |
|-----|----|-----|-----|----|----|----|
| 颜色 | 黑 | 红 | 白 | 黄 | 绿 | 蓝 |
| 定义 | A+ | VCC | GND | B+ | B- | A- |

| | | | |
|----------------|------------|---------------------------------|--|
| 设计 Designed | 日期 Date | 材料 Material | 深圳市雷赛智能控制股份有限公司 SHENZHEN LEADSHINE TECHNOLOGY CO., LTD. |
| 审核 Checked | | 第一角画法 First Angle projection | 混合伺服电机 |
| 批准 Approved | | 重量/比例 Weight/Scale | 1103HBM120H-1000 |
| 图号 Part No. | | 共 1 套 第 1 套 Sheet 1 of 1 | 图号 DWG. NO. LS-HBM110-32-0010-01 |

| | | | | |
|---------|---------|---------------|----------------|-------|
| 版本 Rev: | 日期 Date | 变更文件号 ECR NO. | 变更内容 Revisions | 设计 By |
| V1.0 | 13.4.2 | | 初版 | 王平 |